

ALL INDIA COORDINATED RESEARCH PROJECT
DEPT. OF FAMILY RESOURCE MANAGEMENT
COLLEGE OF HOME SCIENCE
VASANTRAO NAIK MARATHWADA KRISHI VIDYAPEETH
PARBHANI 431402

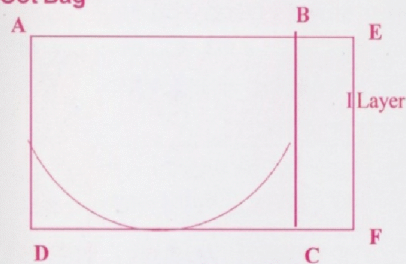
TITLE OF THE FOLDERS

1. Cotton Picking Apron (2004) (2 pages)
2. Trishul weeder (2008) (2 pages)
3. Revolving milking stand and stool (2009) (2 pages)
4. Multipurpose Tailoring Table (2010) (2 pages)
5. Safe and Happy Harvesting with Janai Mittens (2011) (4 pages)
6. Low Cost Drudgery reducing technologies for women in agriculture and allied field (2004- 2013) (4 pages)



Attach a strip of 14 cm width at three sides of the bag A to C, C to D and D to B to add the width to the bag.

Cot Bag

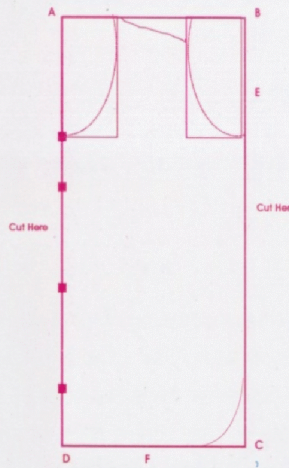


AEDF rectangle is I layer of cot bag
 ABCD rectangle is II layer of cot bag.
 Length BECF is added together pletes to provide extra fullness to the cot bag.
 ABCD rectangle is the calculated size of cloth for cot bag.

Back bodice block

Take calculated size of paper
 Join BC cut points (double layer) to the body of apron.

Stitch AD points separately (two layers of separately)
 Attach 3 - 4 laces at point mentioned in the figure to tie the apron at the back side.
 Give a round cut to the C point
 Joint the sleeves to the whole body.
 Attach a bag to the front body of apron.





□ **Correspondence Address** □
 All India Co-ordinated Research Project
Dept. of Family Resource Management
 College of Home science
Marathwada Agricultural University,
 Parbhani 431 402 (M.S.)

Prof. Jayashree Zend, Sadhana Umrikar,
 Sheela Yeole, Irfana Siddiqui
 PUSHPAK 224248

**COTTON APRON
 FOR
 COTTON PICKING**



 
 All India Co-ordinated Research Project
 Dept. of Family Resource Management
 College of Home science
Marathwada Agricultural University,
 Parbhani 431 402 (M.S.)
 June 2004

Drafting of Apron for Cotton Picking

Marathwada region is the oldest cotton producing region in Maharashtra. Cotton crop is a valuable source of income for the farmers. The contribution of farm women in cotton picking is maximum. This task demand high level of physical activity, causing drudgery. There are no effective technologies available for immediate use of farm women to perform this activity.

Traditionally women collect the cotton in their sari pallu or towel tied along the waist-side. Improved cot bag provided to the apron not only facilitated women to collect the cotton but also reduces the drudgery by reducing the hand movements as there is a less chance to fall the cotton on ground.

Many field trials revealed that use of apron facilitated women while collecting cotton and prevented scratching of the skin while moving in to the field. Use of scarf and apron made up of cotton cloth gave better protection from heat stress by preventing direct exposure of skin to the sunlight.

This apron was specially designed and stitched by MAU-FRM centre considering its need to the women working in these areas.

Drafting of apron will be helpful to those farmers who are interested in stitching apron for cotton picking.

Drafting

Manjarpat/ Chikani/ Gray cloth
(200 x 125 cm (2 meter)

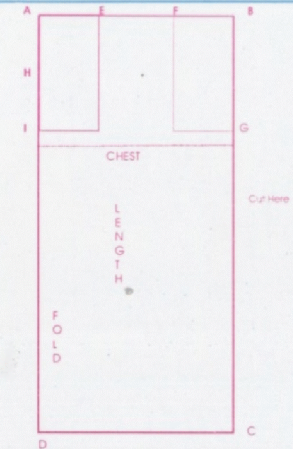
Measurements -

Apron body - Size of Paper - 140 x 75 cm

Stitching - Take calculated size of paper. Fold the paper widthwise twice and keep the fold on left hand. Mark the corners as ABCD. Mark the lines as per the measurements given in the table.

Measurements for Apron b

AB = 35 cm (Chest)
BC = 75 cm Length
AE = 10 cm Neckline
EF = 10 cm Shoulder
FB = 15 cm
BG = 21 cm Arm hole
AH = 10 cm Front neckline
AI = 20 cm Backneckline



Apron Sleeves

Size of paper - 60 cm x 50 cm

Stitching - Take the calculated size of paper and fold the corners ABCD.

Measurements

AB = 25 cm Width
AD & BC = 60 cm Length
BE = 9 cm
DF = 20 cm (Wrist)
FC = 5 cm

Cotton Picking Bag / Pocket

Size of paper - 140 cm x 50 cm

Stitching - Fold the paper at length of 55 cms and make the corner ABCD. Put the gathers at AB point on upper layer of fabric. After putting gathers make a round cut at CD point.

